



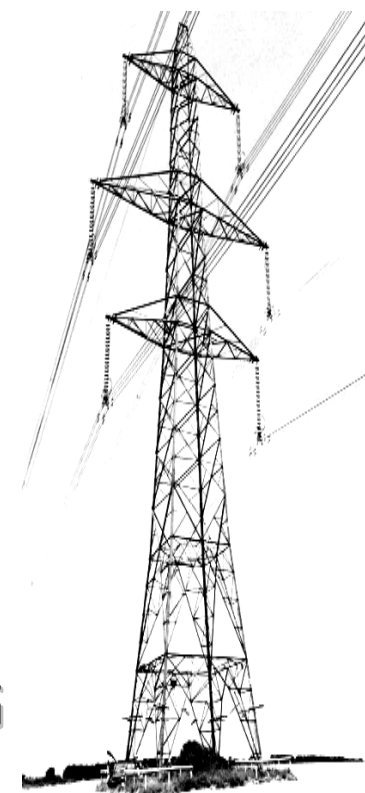
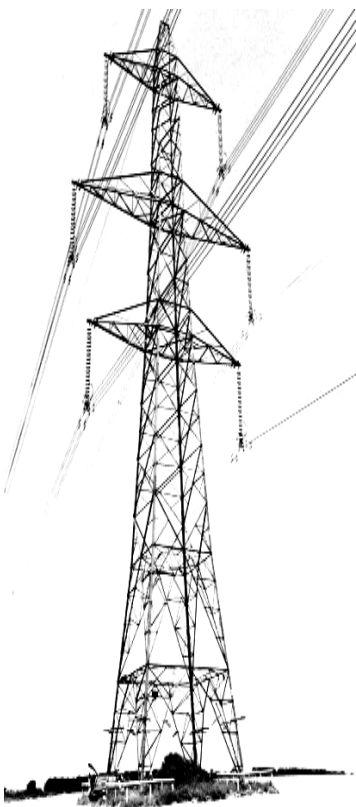
**Warm Welcome**

*From*

**K.K.SHARMA**

**EXECUTIVE DIRECTOR**

**PROJECT PLANNING AND MONITORING**



CII National Conference, 26<sup>th</sup> Nov 2012

# NTPC LIMITED

A Maharatna Company



**- A Quick Snapshot**

## VISION

To be the world's largest and best power producer, powering India's growth

# NTPC in Power Business. . .

NTPC, India's largest  
power company

Set up in 1975

emerging as  
an **'Integrated Power  
Major'**

**341<sup>st</sup>** in the **'2010, Forbes  
Global 2000'** ranking of the  
World's biggest companies'

## VISION & MISSION:

**"To be the world's largest and best power producer, powering India's growth."**

# Group NTPC - 5 Subsidiaries and 20 Joint Ventures

Power Generation	SERVICES	EQUIPMENT MANUFACTURING	COAL AQUISION	POWER TRADING
NTPC Hydro Ltd. (100%)*	NTPC Electric Supply Co. Ltd (100%)	NTPC BHEL Power Projects Pvt Ltd (50%)	International Coal Ventures Pvt Ltd (14.28%)**	NTPC Vidut Vyapar Nigam Ltd (100%)
Kanti Bijlee Utpeadan Nigam Ltd. (65%)	Utility Power tech Ltd. (50%)	BF NTPC Energy System Ltd (49%)	NTPC SCCL Global Ventures Pvt Ltd (50%)	National Power Exch Ltd (16.67%)
Bhartiya Rail Bijlee Company Ltd. (74%)	NTPC Alstom Power Services Ltd. (50%)	Transformers and Electrical Kerla Ltd. (44.6%)	CIL NTPC Urja Pvt Ltd. (50%)	
Aravali Power Company Pvt. Ltd. (50%)	National High Power Test Laboratory Ltd (20%)			
NTPC Tamil Nadu Energy Company Ltd. (50%)	Energy Efficiency Services Ltd (25%)			
Nabinagar Power Gene-Rating Pvt Ltd (50%)				
Meja Urja Nigam Pvt Ltd (50%)				
NTPC SAIL Power Co Ltd (50%)				
Ratnagiri Gas & powerPvt Ltd (31.52%)				
Anushakti Vidyut Nimam Ltd (49%)				
Trincomalee Power Co Ltd (50%)				
PAN Asian Renewables Pvt Ltd (50%)				

\*NTPC Hydro Limited is under merger with NTPC

\*\*NTPC has resolved to withdraw from ICVL with the approval of MoP

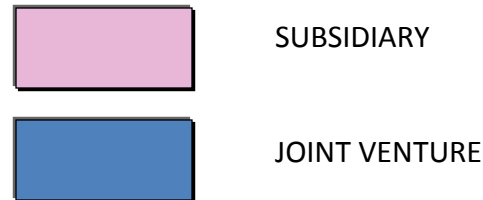


FIGURE IN BRACKET INDICATES NTPC HOLDING

## Performance Highlight -- 2011-2012

- Highest ever capacity of 2820 MW added during the year.
- Exceeded 11th Plan target of 9220 MW capacity addition by adding 9610 MW
- 1160 MW brought to commercial operation. First 660 MW supercritical unit commissioned at Sipat
- AVF of 88.35%, PLF of 85%
- 222.068 BUs of electricity generated during the year
- Net Sales crossed Rs. 60000 crore mark- Total revenue Rs. 64830.65 Cr.
- 5<sup>th</sup> Largest amongst listed companies in terms of Profit after Tax- Rs. 9223.73 Cr.
- Highest ever CAPEX of Rs. 15954.42 Cr. on stand alone basis.
- Group Capex of Rs. 19973 Cr.
- Highest ever dividend for a year @ 40% (incl. proposed final dividend)

## **Performance Highlight - 2012-2013**

**Capacity addition till date : 2660 MW**

# NTPC Capacity Overview

**Target to achieve 1.28 GW capacity by 2032**

S. No.	Description	Capacity (MW)
I	Capacity Commissioned	39674
II	Capacity Under Construction	16309 (Hydro – 1491MW)
III	Capacity Under bidding	13041
IV	Capacity for which FR approved	12221
V	Capacity Under Pipeline	30000-40000

## Station Overview

<b>No of Coal Based Station (Operating)</b>	<b>16</b>
<b>No of Gas Based Station (Operating)</b>	<b>7</b>
<b>No of Coal Based Projects (Under Construction)</b>	<b>11</b>
<b>No of Hydro Station (Under Construction)</b>	<b>4</b>
<b>No of Solar Projects (Under construction)</b>	<b>2</b>



## Total 16309 MW under Construction at 17 Locations

### Projects Under Construction

Project	Unit Cap MW	No of Units	Total Cap MW	Project Locations
Thermal	195	2	390	Kanti(2)
	250	7	1750	BRBCL(4), Bongaigon(3)
	500	6	3000	Rihand(1), Vindhyachal(2),Mouda(1), Vallur(2)
	660	11	7260	Barh(5), Solapur(2), Mouda(2), Meja(2)
	800	3	2400	Kudgi(3)
	<b>Total Thermal</b>		<b>29</b>	<b>14800</b>
Hydro	200	4	800	Koldam(4)
	130	4	520	Tapovan Vishnugad(4)
	457	3	171	Lata Tapovan(3)
	4	2	8	Singrauli(2)
<b>Total Hydro</b>		<b>13</b>	<b>1499</b>	
Solar	5	2	10	Dadri(1), A &N(1)
<b>G Total</b>		<b>44</b>	<b>16309</b>	



## NTPC's Future Projects with 660 / 800 MW units of Super Critical

Project	State	Capacity (MW)
<b>660 MW Units – (Under Award)</b>		
<b>Nabinagar STPP -JV with BSEB</b>	<b>Bihar</b>	<b>1980 (3x660)</b>
<b>800 MW Units – (Under Award)</b>		
<b>Darlipalli-I</b>	<b>Orissa</b>	<b>1600 (2x800)</b>
<b>Lara-I</b>	<b>Chhattisgarh</b>	<b>1600 (2x800)</b>
<b>Gajmara</b>	<b>Orissa</b>	<b>1600 (2x800)</b>
<b>Other Projects (Under Tender Stage)</b>		
<b>Tanda-II (Coal)</b>	<b>Uttar Pradesh</b>	<b>1320 (2x660)</b>

## NTPC's Future Projects with 500 / 660 / 800 MW unit

Project	State	Capacity(MW)
Khargone (Coal)	Madhya Pradesh	1320 (2x660)
Gadarwara-I	Madhya Pradesh	1320 (2x660)
Bilhaur	Uttar Pradesh	1320 (2x660)
Barethi	Madhya Pradesh	1320 (2x660)
Talcher TPS Exp.	Orissa	1320 (2x660)
North Karanpura	Jharkhand	1320 (2x660)
Katwa	West Bengal	1600 (2x800)
Adra	West Bengal	1320 (2x660)
Ramagundam IV	Andhra Pradesh	1320 (2x660)
Singrauli-III	Uttar Pradesh	500 (1 x 500)
Nabinagar-II	Bihar	1320 (2x660)
Dhuvran	Gujrat	1320 (2x660)

**\* And Many More**

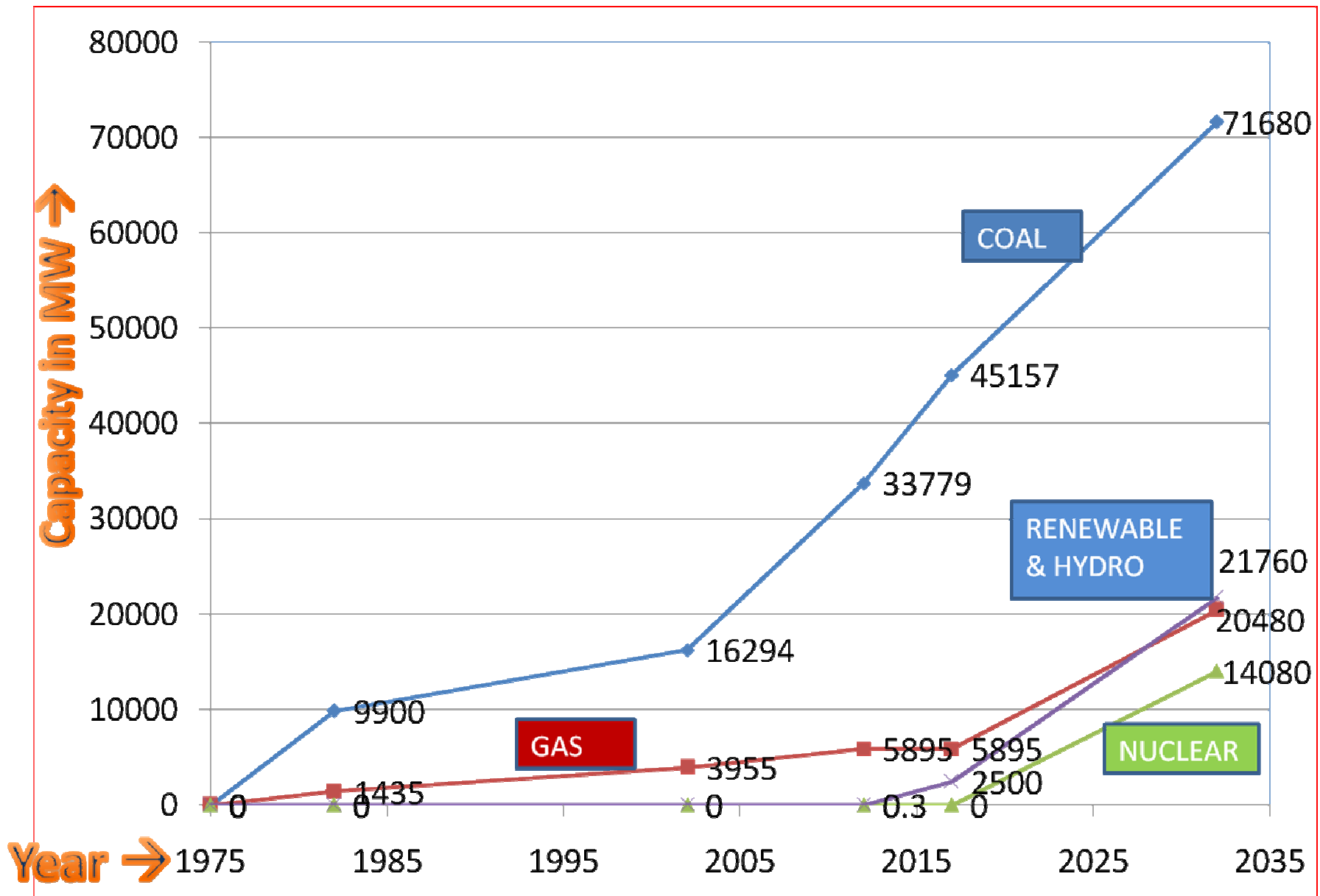
# NTPC's Future Capacity Mix

## TARGET CAPACITY MIX BY 2032:

<b>Coal</b>	<b>56%</b>
<b>Gas</b>	<b>16%</b>
<b>Nuclear</b>	<b>11%</b>
<b>Renewable and Hydro</b>	<b>17%</b>

**Targeted Capacity By 2032 -- 128,000 MW**

# NTPC CAPACITY ROAD MAP



# NTPC Expectation from Market

- NTPC expect from Manufacturer that manufacturing facility for all major items i.e. Turbine , Boiler & BOPs shall be implemented in fast mode.
- Project Management capability to be developed
- Indigenous after sales service and spare parts manufacturing within India.
- R&D facility to be set up within India for advancement of material and technology to achieve 45% targeted efficiency level.
- Assisting NTPC personal for technology absorption for high quality works and sustained reliable operation.
- R&M of Power plants.

**Thanks for your attention**